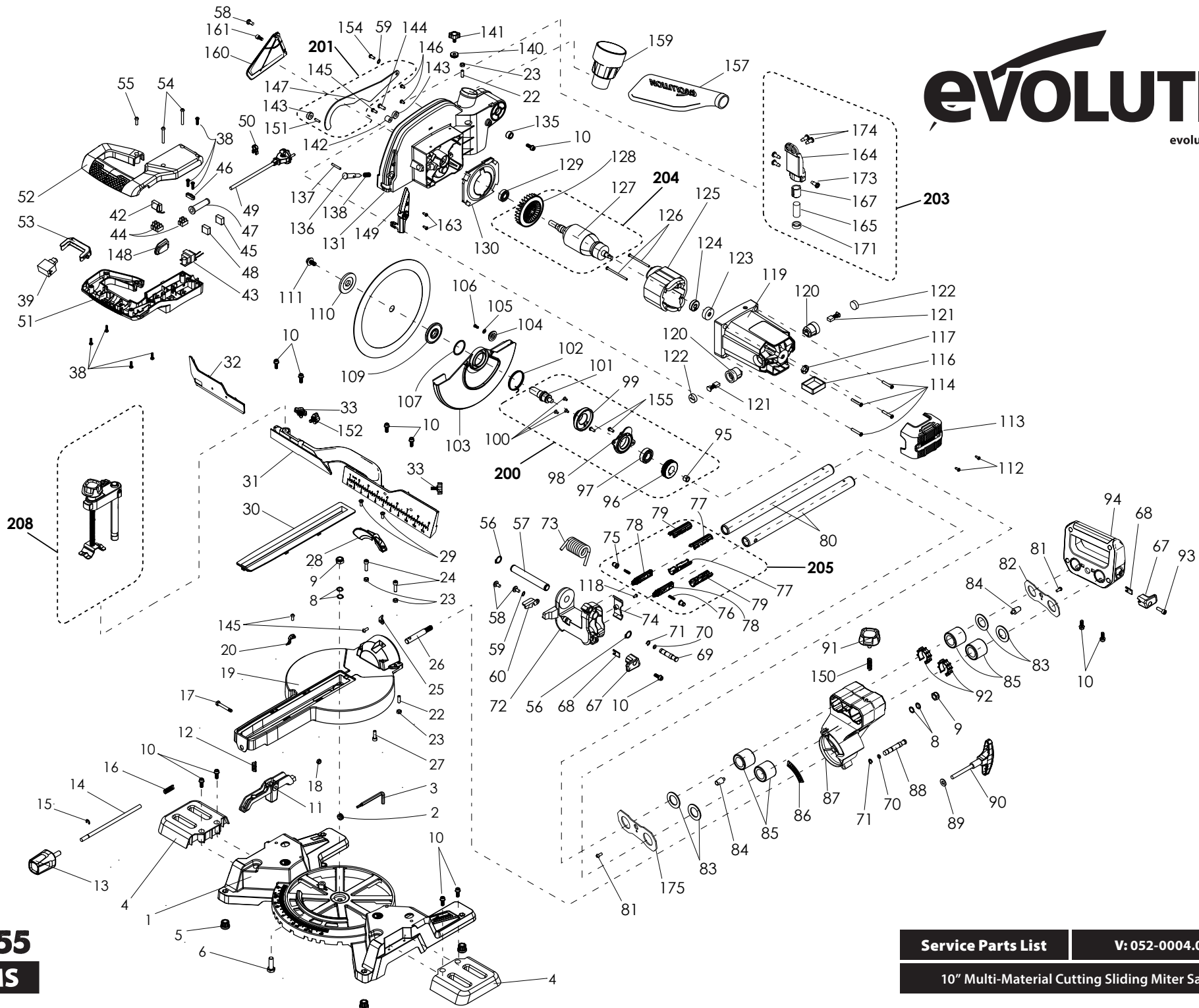


evolution®

evolutionpowertools.com



R255
SMS

Service Parts List	V: 052-0004.01	120V USA
10" Multi-Material Cutting Sliding Miter Saw		

No.	Description	Part Code	Qty
1	Base - Silver	052-0101	1
2	Grommet 10mm	052-0102	1
3	Hex Key	052-0325	1
4	Table Extension	052-0104	2
5	Foot	052-0105	4
6	Hex Head Bolt M10x30	F-HB-M10-30-20-ST-BO	1
8	Flat Washer 12mm	F-W-M12-ST-BO	4
9	Nylock Nut M10	F-NNIF-M10-ST-BO	2
10	Flanged Cap Screw M6x16	F-SFCS-M6-16-ST-BO	12
11	Table Positioning Handle	052-0111	1
12	Spring	052-0113	1
13	Table Locking Knob	052-0114	1
14	Push Rod	052-0116	1
15	External E-Clip 6mm	F-ECLIP-6-100-ST-BO	1
16	Spring	052-0118	1
17	Screw M6x45	F-SHCS-M6-45-ST-BO	1
18	Nylock Nut M6	F-NNIF-M6-ST-BO	1
19	Table	052-0121	1
20	Mitre Indicator	052-0122	1
22	Grub Screw M6x20	F-SSCFP-M6-20-ST-BO	2
23	Hex Nut M6	F-NSF-M6-ST-BO	4
24	Cap Screw M6x25	F-SHCS-M6-25-ST-BO	2
25	Bevel Indicator	052-0128	1
26	Connecting Bolt	052-0130	1
27	Cap Screw M6x20	F-SHCS-M6-20-ST-BO	1
28	Chip Deflector	052-0132	1
29	Cross Head Screw M5x16	F-SPHPZ-M5-16-ST-BO	2
30	Channel Guide	052-0134	1
31	Fence	052-0137	1
32	Adjustable Fence	052-0357	1
33	Wing Screw	052-0140	2
38	Tapping Screw 4X16	F-TFPX-4-16-ST-BO	7
39	On/Off Switch (110V, 120V, 230V)	052-0143	1
43	Laser Transformer (UK 100V - USA 120V)	052-0151	1
44	Terminal Block	052-0154	2
46	Cable Clamp 120V & 230V	052-0156	1
47	Cable Sheath - 120V & 230V	052-0157	1
49	Power Cable (120V)	052-0162	1
50	Cable Clip	052-0165	1
51	Lower Handle	052-0167	1
52	Upper Handle	052-0169	1
53	Trigger	052-0171	1
54	Cross Head Screw M5x40	F-SPHPZ-M5-40-ST-BO	2
55	Cross Head Screw M5x16	F-SPHPZ-M5-16-ST-BO	1
56	External Circlip 16mm	F-CCEXT-16-100-ST-PO	2
57	Head Pivot Axle	052-0176	1
58	Cross Head Shoulder Screw M5x8	052-0177	3
59	Wave Washer 7mm	F-WW-M7-ST-BO	2
60	Trench Stop	052-0179	1
61	Cross Head Shoulder Screw M6x9	052-0180	0
67	Cable Tidy	052-0181	2
68	Cable Strain	052-0183	2
69	Lockdown Pin Knob	052-0184	1
70	O-Ring	052-0185	2
71	External E-Clip 8mm	F-ECLIP-8-070-ST-PO	2
72	Head Pivot	052-0187	1
73	Torsion Spring	052-0188	1
74	Laser Wire Cover	052-0189	1
80	Rail	052-0191	2
81	Cross Head Screw M5x10	F-SPHPZ-M5-10-ST-BO	2
82	Bevel Bracket Cover-R	052-0314	1
83	Shaft Seal Ring	052-0194	4
84	Rubber Stop	052-0195	2

No.	Description	Part Code	Qty
85	Linear Ball Bearing	052-0196	4
86	Bevel Label	052-0197	1
87	Neck	052-0199	1
88	33.9 Pin	052-0200	1
89	Flat Washer 8mm	F-W-M8-ST-BO	1
90	Bevel Lock Lever	052-0202	1
91	Sliding Lock Screw	052-0204	1
92	Bearing Spacer	052-0206	2
93	Socket Head Cap Tapping Screw (ST4.5x1)	052-0319	1
94	Rear Handle	052-0210	1
92	Torsion Spring	052-0211	1
103	Lower Guard -Silver	052-0212	1
104	Guard Roller	052-0213	1
105	Flat Washer M4 (Large Form)	F-WD-M10-ST-BO	0
106	Cross Head Screw M4x8	F-SPHPZ-M4-8-ST-BO	1
107	Blade Guard Retaining Ring	052-0216	1
109	Inner Flange	052-0361	1
110	Outer Flange	052-0219	1
111	Arbor Bolt	052-0220	1
112	Tapping Screw (ST4.X16)	052-0320	2
113	Motor End Cap	052-0222	1
114	Tapping Screw 5X30	F-TFPX-5-30-ST-BO	4
116	Pcb Assembly 110V 120V	052-0329	1
117	Constant Speed Magnet	052-0227	1
118	Tapping Screw 4X8	F-TFPX-4-8-ST-BO	1
119	Motor Housing	052-0229	1
120	Carbon Brush Holder (110V&120V)	052-0318	2
121	Carbon Brush (110V&120V)	052-0317	2
122	Carbon Brush Cap	052-0232	2
123	Bearing Cap	052-0233	1
124	Bearing	052-0234	1
125	Stator 1800W (120V)	052-0237	1
126	Tapping Screw (ST4.8x65)	052-0321	2
129	Bearing	052-0244	1
130	Fan Baffle	052-0245	1
131	Upper Guard	052-0246	1
132	Torsion Spring	052-0247	1
135	Head Stop	052-0251	1
136	Spindle Lock	052-0252	1
137	Roll Pin	052-0253	1
138	Compression Spring	052-0254	1
139	Finger Guard	052-0255	1
140	Trench Cut Adjustment	052-0256	1
141	Trench Cut Knob	052-0257	2
142	Guard Stop	052-0259	1
144	Cross Head Screw M6x16	F-SPHPZ-M6-16-ST-BO	1
145	Cross Head Screw M4x16	F-SPHPZ-M4-16-ST-BO	1
146	Cross Head Screw M4x8	F-SPHPZ-M4-8-ST-BO	2
148	Laser Switch Blanking Plate	052-0263	0
149	Guard Lock Blanking Plate	052-0264	0
150	Spring	052-0316	1
152	Wing Screw	052-0322	1
154	Shoulder Screw M6 X 14	052-0332	1
157	Dust Bag	052-0334	1
159	Dust Port Tube Adaptor	052-0336	1
160	Arbor Cover Plate	052-0337	1
161	Arbor Cover Screws	F-SPHPZ-M5-8-ST-BO	1
163	M4 X 10 Us Lock Lever Plate Screw	F-SPHPZ-M4-10-ST-BO	2
164	Laser Holder	052-0363	1
165	Laser Head	052-0341	1
167	Laser Sleeve	052-0364	1
171	Laser Cap	052-0347	1
172	Laser Wire 24Awg (570mm)	052-0348	1

No.	Description	Part Code	Qty
173	Laser Adjust Screw Panhead M4x10	F-SPHPZ-M4-10-ST-WZ	3
174	Laser Holder Screw Panhead Combination M4x12	F-SPHPZ-M4-112-ST-BZ	2
175	Bevel Bracket Cover-F	052-0353	1
200	Gearbox Assembly	052-0365	0
96	Gearbox	052-0367	1
97	Gearbox	052-0267	1
98	Gearbox Cover	052-0268	1
99	Gearbox Cap	052-0269	1
100	Cross Head Countersunk Screw M4x8	F-SCHPZ-M4-8-ST-BO	3
101	Arbor	052-0366	1
155	Screw M5 X 25	F-SPHPZ-M5-18-ST-BO	2
201	Linkage Assembly	052-0051	0
143	Bearing	F-B-606-2Z	2
151	Rivet	052-0315	1
147	Linkage	052-0273	0
203	Laser Assembly	052-0053	0
164	Laser Holder	052-0363	1
165	Laser Head	052-0341	1
167	Laser Sleeve	052-0364	1
171	Laser Cap	052-0347	1
172	Laser Wire 24Awg (570mm)	052-0348	1
173	Laser Adjust Screw Panhead M4x10	F-SPHPZ-M4-10-ST-WZ	3
174	Laser Holder Screw Panhead Combination M4x12	F-SPHPZ-M4-112-ST-BZ	2
204	Armature Assembly 1800W (120V)	052-0056	0
127	Armature	052-0289	1
128	Fan	052-0290	1
205	Slide Shaft Locking Unit	052-0062	0
75	Pin	030-0195	2
76	Compression Spring	030-0196_AF2	2
77	Carriage Housing A	030-0234	2
78	Carriage	030-0236	2
79	Carriage Housing B	030-0235	2
208	3 Piece Quick Release Clamp	052-00324	1



Service Parts List	V: 052-0004.01	120V USA
10" Multi-Material Cutting Sliding Miter Saw		