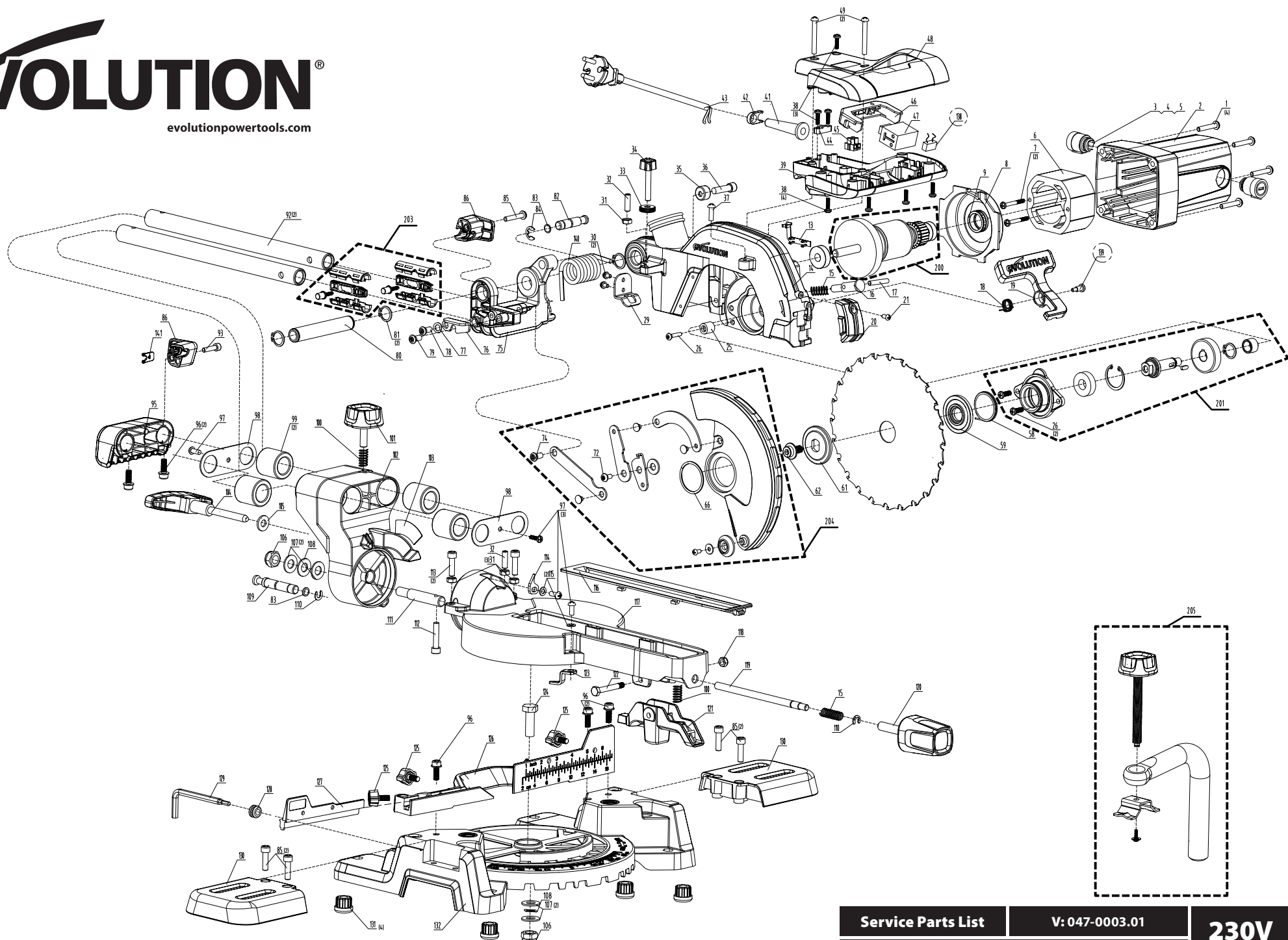


# evolution®

evolutionpowertools.com



**R185**  
**SMS**

**Service Parts List**

**V: 047-0003.01**

**230V**  
**EU**

185mm Multi-Material Cutting Sliding Mitre Saw

| No. | Description                        | Part Code            | Qty | No. | Description                       | Part Code           | Qty | No. | Description | Part Code | Qty |
|-----|------------------------------------|----------------------|-----|-----|-----------------------------------|---------------------|-----|-----|-------------|-----------|-----|
| 1   | Screw M5x25                        | F-SPHPZ-M5x25-ST-BO  | 4   | 97  | Screw M5x12                       | F-SPHPZ-M5-12-ST-BO | 4   |     |             |           |     |
| 2   | Motor Housing                      | 046-0115             | 1   | 98  | Bevel Bracket Cover               | 047-0184            | 2   |     |             |           |     |
| 3   | Brush Holder                       | 046-0114             | 2   | 99  | Rail Bearing                      | 047-0185            | 4   |     |             |           |     |
| 4   | Brush Holder Cap                   | 046-0112             | 2   | 100 | Spring                            | 048-0108            | 2   |     |             |           |     |
| 5   | Carbon Brush (220-240V)            | 046-0113             | 2   | 101 | Sliding Lock Screw Orange         | 048-0165            | 1   |     |             |           |     |
| 6   | Stator 1000W                       | 047-0105             | 1   | 102 | Neck- Bevel Bracket               | 047-0189            | 1   |     |             |           |     |
| 7   | Tapping Screw 4x50                 | F-TFPX-4-50-ST-BO    | 2   | 103 | Bevel Angle Label                 | 047-0191            | 1   |     |             |           |     |
| 8   | Fan Shroud                         | 046-0119             | 1   | 104 | Bevel Lock Lever (Orange)         | 048-0169            | 1   |     |             |           |     |
| 9   | Bearing Cap                        | 048-0202             | 1   | 105 | Washer M8                         | F-W-M8-ST-BO        | 1   |     |             |           |     |
| 13  | Laser Cable Cover                  | 047-0115             | 1   | 106 | Nylock Nut M10                    | F-NNIF-M10-ST-BO    | 2   |     |             |           |     |
| 14  | Blade Housing                      | 047-0116             | 1   | 107 | Washer M10                        | F-W-M10-ST-BO       | 4   |     |             |           |     |
| 15  | Lock Pin Spring                    | 046-0126             | 2   | 108 | Wave Washer 12mm                  | F-WW-M12-ST-BO      | 2   |     |             |           |     |
| 16  | Lock Pin                           | 046-0127             | 1   | 109 | 33.9 Pin                          | 048-0168            | 1   |     |             |           |     |
| 17  | Spring Pin Ø4x28                   | F-SDL-400-28-ST-BO   | 1   | 110 | External E-clip 6mm               | F-ECLIP-6-100-ST-BO | 2   |     |             |           |     |
| 18  | Guard release level Spring         | 046-0141             | 1   | 111 | Connecting Bolt                   | 048-0119            | 1   |     |             |           |     |
| 19  | Guard Release Lever (Orange)       | 046-0122             | 1   | 112 | Cap Screw M6x30                   | F-SHCS-M6-30-ST-BO  | 1   |     |             |           |     |
| 20  | Laser blanking plate               | 047-0133             | 1   | 113 | Cap Screw M6x20                   | F-SHCS-M6-20-ST-BO  | 3   |     |             |           |     |
| 21  | Screw M4x10                        | F-SPHPZ-M4-10-ST-BO  | 1   | 114 | Bevel Indicator (Orange)          | 048-0117            | 1   |     |             |           |     |
| 25  | Guard Stop                         | 046-0124             | 1   | 115 | Washer M5                         | F-W-M5-ST-BO        | 2   |     |             |           |     |
| 26  | Screw M5x16                        | F-SPHPZ-M5-16-ST-BO  | 3   | 116 | Channel Guide (Orange)            | 047-0192            | 1   |     |             |           |     |
| 29  | Finger Guard                       | 047-0136             | 1   | 117 | Table                             | 047-0194            | 1   |     |             |           |     |
| 30  | Screw M4x10                        | F-SPHPZ-M4-10-ST-BO  | 2   | 118 | Nylock Nut M6                     | F-NNIF-M6-ST-BO     | 1   |     |             |           |     |
| 31  | Hex Nut M6                         | F-NSF-M6-ST-BO       | 4   | 119 | Push Rod                          | 047-0195            | 1   |     |             |           |     |
| 32  | Grub Screw M6X20                   | F-SSCCP-M6-20-ST-BO  | 2   | 120 | Table Locking Knob (Orange)       | 048-0109            | 1   |     |             |           |     |
| 33  | Trench Cut Adjusting Screw         | 048-0215             | 1   | 121 | Table Positioning Handle (Orange) | 047-0196            | 1   |     |             |           |     |
| 34  | Trench Cut Knob (Orange)           | 048-0216             | 1   | 122 | Hex Bolt M6x43x8                  | F-HB-M6-43-8-ST-BO  | 1   |     |             |           |     |
| 35  | Head Stop                          | 048-0213             | 1   | 123 | Mitre Indicator (Orange)          | 048-0115            | 1   |     |             |           |     |
| 36  | Cap Screw M6x14                    | F-SHCS-M6-14-ST-BO   | 1   | 124 | Hex Bolt M10x45                   | F-HB-M10-45-ST-BO   | 1   |     |             |           |     |
| 37  | Screw M5x20                        | F-SPHPZ-M5-20-ST-BO  | 1   | 125 | Wing Screw (Orange)               | 048-0124            | 3   |     |             |           |     |
| 38  | Tapping screw 4x16                 | F-TFPX-4-16-ST-BO    | 7   | 126 | Fence-Silver                      | 047-0198            | 1   |     |             |           |     |
| 39  | Handle Lower                       | 047-0140             | 1   | 127 | Moveable Fence-Silver             | 047-0199            | 1   |     |             |           |     |
| 41  | Cable Sheath                       | 046-0109             | 1   | 128 | Grommet                           | 047-0200            | 1   |     |             |           |     |
| 42  | Cord Clip 230V/120V                | 048-0247             | 1   | 129 | Dual Hex Key M5/M8                | F-HEXKEY-M5/8-ST-BO | 1   |     |             |           |     |
| 43  | Cable 230V UK 2m PVC               | 047-0120             | 1   | 130 | Table Extension                   | 047-0201            | 2   |     |             |           |     |
| 44  | Cable Clamp                        | 046-0106             | 1   | 131 | Foot                              | 048-0105            | 4   |     |             |           |     |
| 45  | Connector Block                    | 047-0148             | 1   | 132 | Base-Silver                       | 047-0202            | 1   |     |             |           |     |
| 46  | Trigger (Orange)                   | 046-0103             | 1   | 138 | Capacitor                         | 047-0205            | 1   |     |             |           |     |
| 47  | Switch                             | 046-0107             | 1   | 139 | Release Level Shoulder Screw      | 048-0209            | 1   |     |             |           |     |
| 48  | Handle Upper                       | 047-0150             | 1   | 140 | Main Torsion Spring               | 047-0206            | 1   |     |             |           |     |
| 49  | Screw M5x35                        | F-SPHPZ-M5-35-ST-BO  | 2   | 141 | Cable Strain                      | 048-0172            | 1   |     |             |           |     |
| 58  | Blade Guard Torsion Spring         | 046-0141             | 1   | 200 | Armature Assembly 230V            | 047-0050            | 1   |     |             |           |     |
| 59  | Inner Flange (20mm)                | 047-0157             | 1   | 201 | Gearbox Assembly                  | 047-0055            | 1   |     |             |           |     |
| 61  | Outer Flange                       | 047-0159             | 1   | 203 | Flat Pack Assembly                | 047-0061            | 2   |     |             |           |     |
| 62  | Arbour Bolt M8x16                  | 048-0188             | 1   | 204 | Blade Guard Assembly              | 047-0062            | 1   |     |             |           |     |
| 66  | Guard Coil Spring Clip             | 046-0152             | 1   | 205 | 1PC Clamp Assembly                | 047-0065            | 1   |     |             |           |     |
| 72  | Shoulder Screw                     | 047-0166             | 1   |     |                                   |                     |     |     |             |           |     |
| 74  | Shoulder Screw Guard Linkage       | 046-0146             | 1   |     |                                   |                     |     |     |             |           |     |
| 75  | Pivot Block                        | 047-0170             | 1   |     |                                   |                     |     |     |             |           |     |
| 76  | Trench Stop                        | 048-0150             | 1   |     |                                   |                     |     |     |             |           |     |
| 77  | Wave Washer 7mm                    | F-WW-M7-ST-BO        | 1   |     |                                   |                     |     |     |             |           |     |
| 78  | Cross Head Shoulder Screw M6x9     | 048-0149             | 1   |     |                                   |                     |     |     |             |           |     |
| 79  | Cross Head Shoulder Screw M6x9     | 048-0151             | 1   |     |                                   |                     |     |     |             |           |     |
| 80  | Pivot                              | 047-0171             | 1   |     |                                   |                     |     |     |             |           |     |
| 81  | External Circlip 16mm              | F-CCEXT-16-100-ST-PO | 2   |     |                                   |                     |     |     |             |           |     |
| 82  | Lock Down Pin                      | 048-0157             | 1   |     |                                   |                     |     |     |             |           |     |
| 83  | O Ring                             | 048-0167             | 2   |     |                                   |                     |     |     |             |           |     |
| 84  | External E-clip 8mm                | F-ECLIP-8-100-ST-BO  | 1   |     |                                   |                     |     |     |             |           |     |
| 85  | Cap Screw M5x20                    | F-SHCS-M5-20-ST-BO   | 5   |     |                                   |                     |     |     |             |           |     |
| 86  | Cable Tidy (Orange)                | 048-0154             | 2   |     |                                   |                     |     |     |             |           |     |
| 92  | Rail                               | 047-0178             | 2   |     |                                   |                     |     |     |             |           |     |
| 93  | Cap Tapping Screw 5x20             | F-TFSHC-5-20-ST-BO   | 1   |     |                                   |                     |     |     |             |           |     |
| 95  | EU Rail Stop-Carry Handle (Orange) | 047-0179             | 1   |     |                                   |                     |     |     |             |           |     |
| 96  | Custom Cap Screw M6x16             | F-SHCS-M6-16-ST-BO   | 5   |     |                                   |                     |     |     |             |           |     |



Service Parts List

V: 047-0003.01

230V  
EU

185mm Multi-Material Cutting Sliding Mitre Saw